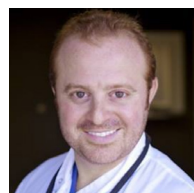




2 PREV EVALS 10 YEARS EXP

The split wedge engages the gingival portion of proximal boxes to seal the band against the tooth.

Michael Slomnicki, DMD Brooklyn, NY



10 PREV EVALS 20 YEARS EXP

The size & flexibility of the wedge allows great seal and superior adaptation.

Pedram Mastour, DDS Culver City, CA



8 PREV EVALS 36 YEARS EXP

I am confident there will be no flash of composite that would be hard to remove.

Joel Doyon DDS Bar Mills, ME

YOUNG SPECIALTIES

BurtonBands VursaWedge Kit



Thanks to a unique split-wedge design, VursaWedge helps clinicians obtain improved contour, contact, and seal at the gingival margin—producing superior results quickly.

When performing a Class II direct composite restoration, what dentist doesn't want a tight gingival seal, good proximal contact, and a perfect contour? If one unique product could improve the seal, contact, and contour while saving time and improving the quality of the final restoration, would it be worth a try? Dr. Michael Slomnicki definitely thinks it is.

Introduced to the revolutionary wedge technology of BurtonBands VursaWedge Kit during this DPS evaluation, Dr. Slomnicki discovered that the unique split-wedge design helped him "obtain a good gingival seal in Class II restorations with no overhang and allowed for great band adaptation to the prepared tooth." He explained, "The split wedge engages the gingival portion of proximal boxes to seal the band against the tooth, ensuring no overhang."

VursaWedge is compatible with all major matrix band and ring systems, and the split-wedge design allows practitioners to achieve superior results in less time, according to Young Specialties, the exclusive distributor of the VursaWedge Kit, which includes 80 Split Wedges and 20 optional Wedge2 Wedges. "VursaWedge improves the contour of my restorations, sharply reduces the excess, improves the overall restoration's form and, most importantly, requires much less time to finish and trim," shared Dr. Slomnicki.

Wedge Design & Placement

VursaWedge has wings that gently curve next to and under the papilla to prevent upward displacement and improve contour, contact, and seal at the gingival margin, according to the manufacturer. Calling it a superior product, Dr. Jeremy Lowell said the "wedges secure solidly and don't slip out," and

the shape and color of the wedge make it easy to see, even in a bloody field. Andre Kanarki, DDS, said it was less rigid than a regular wooden wedge and provided better contours. "The split wedge is a nice replacement for small and medium traditional wedges since it comfortably adapts to those spaces," said Dr. Michael Kelly, who felt that larger traditional wedges work better for cases with a wide embrasure. Although the first size on the market is designed for most cases, the manufacturer has indicated that more VursaWedge sizes, including Medium, Large, and an Anatomical size, are coming in the summer of 2021.

In very tight interproximal spaces, Dr. Joel Doyon had some difficulty fitting the two split tips into the space, while Dr. Charley Cheney, III, said the wedges are "easy to use, create great contacts, and improve wedge placement." Dr. Joann Kania said VursaWedge was easier to place than wood, caused less tissue trauma, and "sealed around the papilla."

Interproximal & Lingual Gingival Seal

VursaWedge is designed to create a tight gingi-



takeaways

- Split-wedge design allows wings to gently curve next to and under the papilla, preventing upward displacement
- Improves contact, gingival seal, and contour
- Saves time during procedures
- Compatible with any matrix band and ring system
- Kit includes 80 Split Wedges and 20 Wedge2 Wedges



Charley Cheney, III, DMD Newnan, GA

"The wedges are easy to use, create great contacts, and improve wedge placement."

Michael Szymanski "create a good proximal contact with Class II composites," which "allowed for great band adaptation to the prepared tooth."

Overall Satisfaction

Several evaluators said the wedges save time and improve the quality of final restorations, including Dr. Szymanski and Dr. Michael Pardonnet, who said less finishing time was required after using VursaWedge. Dr. Slomnicki said he now has more confi-

dence in his restorations and summed up the product's benefits in one sentence. "VursaWedge is compatible with several ring matrix systems, there's no overhang with a great seal, and the second wedge (Wedge2) is a wonderful innovation to further seal the band to the tooth and reduce marginal excess on buccal or lingual sides."

FOR MORE INFORMATION:

800.558.6684
www.youngspecialties.com

PRODUCT EVALUATION SNAPSHOT

CRITERIA BASED ON AVERAGE SCORE (OUT OF 5)



YOUNG SPECIALTIES BURTONBANDS VURSAWEDGE KIT

FINAL SCORE AVERAGE OF SECTIONS A AND B

4.2

